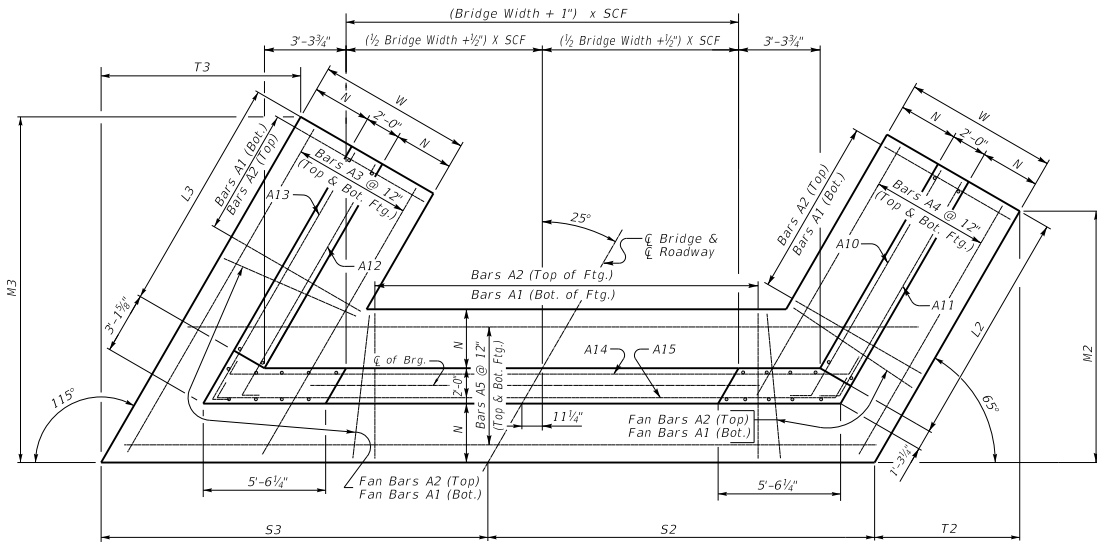


25° SKEW VARIABLE BRIDGE WIDTH 2:1 FILL SLOPES WINGS PARALLEL TO ROADWAY

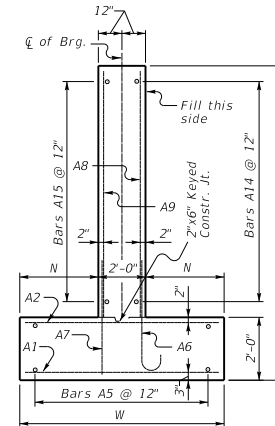
ABUTMENT SKEW CORRECTION FACTOR (SCF) = 1.103



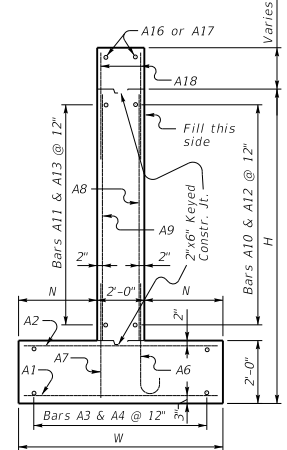
(Left Skew as shown; right skew opp. hand)

PLAN

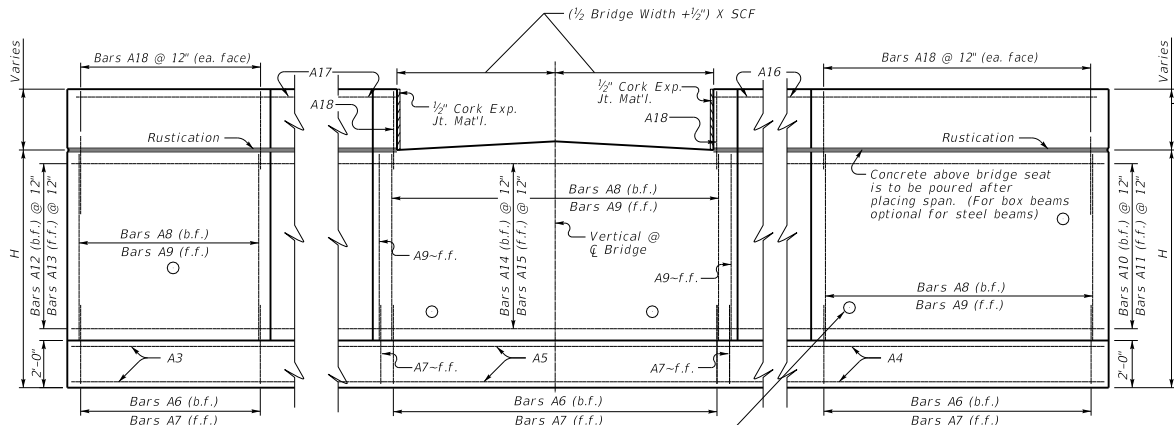
NOTE: Trim A16 & A17 bars if necessary
Trim A3 bars as necessary



WALL SECTION

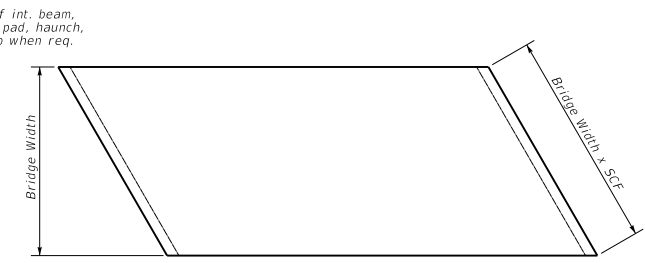


WING SECTION

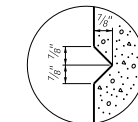


ELEVATION

Place 4" weep hole drains at 8'-0" centers at such elevation as to afford best drainage of backfill, in accordance with the Standard Specifications.



PLAN OF SUPERSTRUCTURE SLAB



**RUSTICATION
GROOVE**

KENTUCKY
DEPARTMENT OF HIGHWAYS
25° SKEW VARIABLE
WIDTH ABUTMENT
PARALLEL WINGS

STANDARD DRAWING NO. BSA-051
SUBMITTED BY *Bob Adams* DATE 02-26-20
APPROVED BY *[Signature]* DIRECTOR DIVISION OF STRUCTURAL DESIGN
APPROVED BY *[Signature]* STATE CIVIL ENGINEER DATE 02-26-20